

Mouse CD3E&CD3D/CD3 epsilon&CD3 delta Protein



Cat. No. CD3-MM205

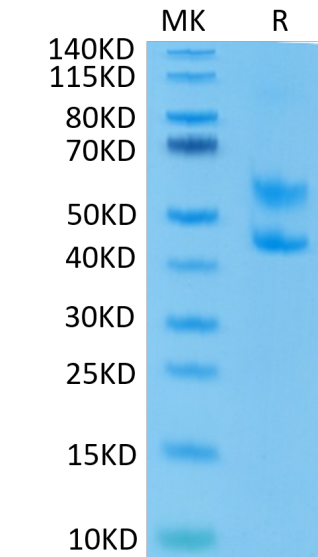
Description	
Source	Recombinant Mouse CD3E&CD3D/CD3 epsilon&CD3 delta Protein is expressed from HEK293 with hFc tag at the C-Terminus of CD3E and CD3D. It contains Asp23-Asp108(CD3E) and Phe22-Ala105(CD3D).
Accession	P22646(CD3E)&P04235(CD3D)
Molecular Weight	The protein has a predicted MW of 36.1 kDa (CD3E) and 35.2 kDa (CD3D). Due to glycosylation,the protein migrates to 50-65 kDa and 40-50 kDa based on Bis-Tris PAGE result.
Endotoxin	Less than 1 EU per µg by the LAL method.
Purity	> 95% as determined by Bis-Tris PAGE > 95% as determined by HPLC

Formulation and Storage	
Formulation	Lyophilized from 0.22µm filtered solution in PBS (pH 7.4). Normally 8% trehalose is added as protectant before lyophilization.
Reconstitution	Dissolve the lyophilized protein in distilled water. Please refer to the Certificate of Analysis for detailed instructions.
Storage	-20 to -80°C for 12 months as supplied from date of receipt.-80°C for 3 months after reconstitution.Recommend to aliquot the protein into smaller quantities for optimal storage. Please minimize freeze-thaw cycles.

Background	
T-cell surface glycoprotein CD3 epsilon & CD3 delta chain, also known as CD3E & CD3D , are single-pass type I membrane proteins.When antigen presenting cells (APCs) activate T-cell receptor (TCR), TCR-mediated signals are transmitted across the cell membrane by the CD3 chains CD3D, CD3E, CD3G and CD3Z. All CD3 chains contain immunoreceptor tyrosine-based activation motifs (ITAMs) in their cytoplasmic domain.	

Assay Data

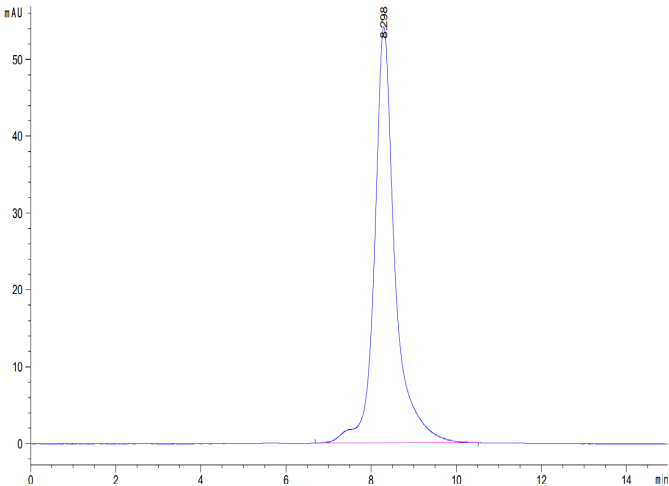
Bis-Tris PAGE



Mouse CD3E&CD3D on Bis-Tris PAGE under reduced condition. The purity is greater than 95%.

SEC-HPLC

Assay Data



The purity of Mouse CD3E&CD3D is greater than 95% as determined by SEC-HPLC.